

ELLIPSE



Why Ellipse?

- Two impressive 42' floorplans
- Unmatched performance of Maxum Chassis®
- Flexsteel® cab seats with heat/massage
- MCD solar/blackout roller shades
- LED lighting
- Stainless steel appliances
- Corian® countertops
- Aqua-Hot® heating system
- Exterior entertainment center with a 32" HDTV
- Polished porcelain tile floors



ON THE COVER: 42QD Sierra Full-Body Paint

42GD Marbella with Coffee-Glazed Forest Cherry Cabinetry

REFINEMENT AT ITS VERY BEST

Attention to detail has never looked so good. Welcome to the Itasca Ellipse®. Of course, the foundation of its beauty lies in the revolutionary Maxum® tag-axle chassis with lowered-rail construction that delivers a superior ride with astonishing exterior storage capacity. You will grasp the power of the 450-hp Cummins® diesel engine in the Flexsteel® luxury six-way adjustable cab seats that come standard with heat and massage, power lumbar support, and a queen passenger seat with a powered footrest. With two spectacular 42' floorplans, you can also choose the All Electric Coach that includes an

induction range top and eliminates the need for LP. Stunning interior elements including Corian® countertops, porcelain tile flooring, LED ceiling lights, a security safe, and an electric fireplace add to the luxurious ambiance. When it comes to outdoor entertaining, an available pull-out Tailgate Package offers a single-burner induction range top, steel counter, lockable refrigerator/freezer, storage area, and cold water access. Plus, the 32" HDTV extends and pivots for optimal viewing. Comfort meets luxury and efficiency. Behold the Itasca Ellipse, refined for the sophisticated RV enthusiast.



RECOGNIZED QUALITY The RV Dealers Association bestows its annual Quality Circle Award based on dealer ratings to manufacturers that provide exceptional products, service and support. Only one manufacturer has received this award for seventeen consecutive years: Winnebago Industries®.

BEST IN CLASS

See how Winnebago Industries takes motorhome design and function to the next level, and why we've earned the right to be called the Most Recognized Name in Motorhomes.®



Click on this icon throughout the brochure to link to more information on the web.



A wall-mounted **Security Safe** with removable shelves and an electronic key pad keeps your valuable items secure.



Keep your Ellipse looking new with the **Dirt Devil® Central Vacuum**.



Important gauges, switches and controls are all centrally located in the **OnePlace® Systems Center**.



Watch HD video from multiple sources, on multiple TVs simultaneously with the **HDMI 4x4 Matrix Video Selection System**.



The **Infotainment Center with Rand McNally RV GPS** has it all: 10.4" touch screen color monitor, compass, outside temperature, Bluetooth™, turn-by-turn voice guidance, and so much more.



The **Rest Easy® Extendable Sectional Sofa** with available ottomans glides from a sofa to a lounge to a bed at the touch of a button.

BEST IN CLASS

See how Winnebago Industries takes motorhome design and function to the next level, and why we've earned the right to be called the Most Recognized Name in Motorhomes.®



Click on this icon throughout the brochure to link to more information on the web.



Available **Recliner** with storage cabinet and pull-out table.



The smooth-retracting **MCD Solar/Blackout Roller Shades** let you control your light and privacy—no matter the time of day.



Eliminate the need for LP by selecting the All Electric Coach option, featuring the quick-heating **Induction Range Top**.

TrueAir® Maximum Comfort A/C Three high-efficiency, low-profile, roof-mount cooling units and precision engineered ducting deliver unsurpassed cooling power.

- D-shaped, formed ductwork optimizes airflow
- Triple-zone thermostat controls offer precision cooling
- No roof air condensation
- Infinitely adjustable ceiling vents provide finite control
- Designed to maximize coach comfort



You will always have fresh, clean laundry during your travels when you select the available **Washer and Dryer**.



42GD Marbella with Coffee-Glazed Forest Cherry Cabinetry

We've made lounging an art. Let your relaxation begin in the Ultraleather™ furniture, which includes a Rest Easy® Extendable Sectional Sofa. The Ellipse is loaded with luxurious, as well as practical, amenities including porcelain tile flooring, MCD solar/blackout roller shades, a Blu-Ray™ Home Theater Sound System and LED ceiling lighting. Staying comfortable inside—no matter the temperature outside—is easy with the TrueAir® maximum comfort air conditioning and Aqua-Hot® heating system.



Available Ottomans

Beautiful coffee-glazed cabinetry, Corian solid-surface countertops with a matching backsplash and sink covers, and stainless steel appliances highlight the elegance of the galley. The residential stainless steel French door refrigerator, microwave, available dishwasher, and abundance of storage create a fully functional workspace for all your culinary creations. You can choose the available All Electric Coach option for an energy-efficient induction range top.



42GD Galley



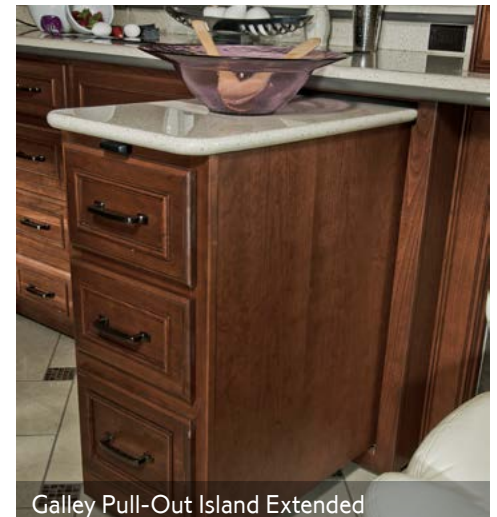
Range Top



Dishwasher



Galley Pull-Out Island Retracted



Galley Pull-Out Island Extended



Residential Stainless Steel French Door Refrigerator



Glide-Out Freezer Drawer





Dining Table



Dining Table Extended for Four



42GD Bedroom

After a long day, the powered king bed with the Ideal Rest Natural Reserve digital comfort control mattress is a welcome sight. Featuring natural bamboo and cotton fibers, and a duo-firmness reversible insert, you can adjust each side of the bed to the ideal comfort setting for a great night's sleep. The 42GD offers a wonderfully large wardrobe while the 42QD offers twin wardrobes and a spacious private master bathroom.



42GD Wardrobe



Available Washer and Dryer



42GD Chest of Drawers



42GD Bathroom



42GD BIG Shower



Dash

Take a seat behind the wheel and you'll appreciate the creature comforts that make driving the Ellipse so pleasurable. Adjust everything to your satisfaction—the steering wheel, foot pedals, and six-way Flexsteel® luxury seats that feature heat and massage, power lumbar support, and a powered footrest on the passenger seat. The standard Infotainment Center with Rand McNally RV GPS and Sirius XM™ satellite radio give both the driver, as well as the passenger, comfort and control while being on the road.



Infotainment Center with
Rand McNally RV GPS



MCD Solar/Blackout Roller Shades

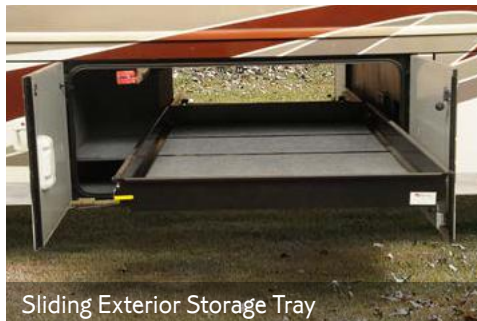


FlexSteel Cab Seat

The Ellipse's commitment to comfort extends well beyond its interior. With its vast storage, you will have plenty of room to bring the necessities as well as the extras. An available 90" x 54" sliding storage tray allows easy access to gear from both sides of the coach. Choose the available Tailgate Package and experience the ultimate in outdoor entertaining with a single-burner induction range top, stainless steel counter, refrigerator/freezer storage and cold water access. With the exterior entertainment center, you can watch all your favorite programs on the 32" HDTV that extends and rotates for easy viewing. A powered hose and cord reel, along with a QuickConnect® hose nozzle, makes hookups a snap. Keep hoses connected even when the compartment door is shut thanks to the QuickPort® service connection hatch.



Available Tailgate Package



Sliding Exterior Storage Tray



Exterior Entertainment Center



Exterior Service Center with Wash Station

Fiberglass Roof

The crowned, one-piece fiberglass roof is backed by a 10-year limited parts-and-labor roof skin warranty.

Thermo-Panel® Sidewalls

By layering fiberglass and high-density block foam insulation with welded aluminum support structures, we create some of the industry's strongest, most durable and lightweight sidewalls.

E-Coating An electrodeposition coating helps protect critical steel components.

Embedded Steel Metal substructures embedded into the sidewall provide solid attachment points to keep cabinets and appliances mounted securely in place.

Laser-Cut Tubing Precision laser cutters create precise joints in structural steel that are stronger and require less welding.



Interlocking Joints Specially engineered interlocking joints connect the floor, sidewalls and roof where competitors often rely on simple screws to bear the weight.



Solid Framework Aluminum extruded in our own facility to our exacting standards creates an extremely strong and solid structural framework.

**SUPER
STRUCTURE**
BUILT TO LAST

Every coach—from our smallest Class C to our largest diesel-pusher model—is built to Winnebago Industries'® legendary SuperStructure® construction standards. It's a process developed and refined over more than 50 years of building some of the strongest, most durable coaches in the industry.

3-point engine mounting reduces engine vibration.

Engine compression brake uses the engine to slow the coach, promoting longer brake life.

Allison® 3000 MH 6-speed automatic transmission includes a touchpad control for ease of use.

Rear axle incorporates proprietary gear machining for a smoother, quieter ride.

The lowered-rail design moves intrusive rails from storage areas, creating up to 199 cubic feet of storage.

ZF IFS front suspension and NeWay® rear air suspension provide superior ride and handling.

15,000-lb. trailer hitch*

Taller, pass-through storage height accommodates bulky items.

MAXUM[®]

CHASSIS

Extra space in critical areas allows for more pass-through storage.

Up to a 60° wheel cut provides a tighter turning radius and better maneuvering.

"Clean Air Diesel" 450-hp ISL Cummins® engine delivers hill-climbing power when you need it most.

Low frame rails create a lower center of gravity, improving stability.

Winnebago Industries' SuperStructure integrated with the lowered-rail design creates a chassis that is seven times stronger than typical raised-rail chassis designs.

Color-coded air lines make service easy.

Dual-fill fuel tank.

A True Work of Art

You may not be able to see the Freightliner® Maxum Chassis as you're driving through the Rockies, but you'll know it's there. Its powerful Cummins turbo-charged diesel engine and Allison® transmission go to work so you don't have to sweat the peaks and valleys ahead.

Through a strong partnership with Freightliner, the undisputed leader in diesel motorhome

chassis, we set a new standard for handling, ride and performance in diesel chassis design.

But performance doesn't mean sacrificing storage. The innovative lowered-rail design of the Maxum Chassis opens up a cavernous basement storage compartment, offering up to 199 cubic feet of storage.

Michelin® tires and polished aluminum wheels look sharp.

4-wheel ABS anti-lock air brakes provide fast stopping power.

TESTING

Before rolling out of our factories, every coach undergoes an extensive 113-point inspection. Each coach also passes a high-pressure water test that simulates rain at a rate of 50-inches per hour to check for leaks. During the design process, our computer simulations, physical testing center, and rigorous test track ensure each model is built to last.



DETAILS

At Winnebago Industries, we treat the features you can't see with the same care as the ones you can. Look in the access panels of some of our competitors' coaches and you'll see loose insulation and wires haphazardly strewn about. Winnebago Industries maintains a clean fit and finish throughout so your coach will last for the long haul.



BUILT IN-HOUSE

We extrude our own aluminum. We rotocast our own plastic components. In fact, we manufacture most of our own parts so they are designed to fit the space, rather than fitting the space to an awkward off-the-shelf component size.



**SUPER
STRUCTURE**
BUILT TO LAST

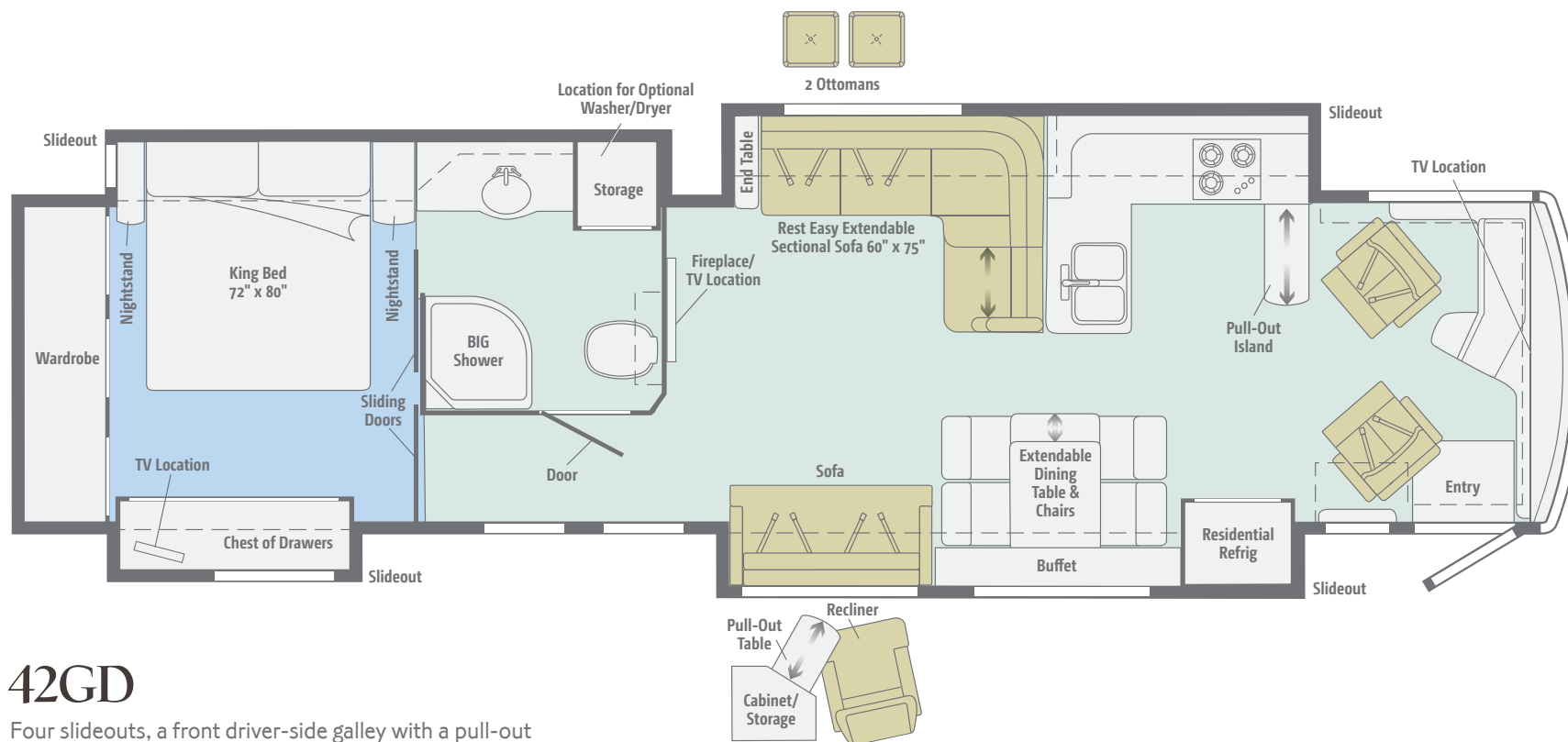
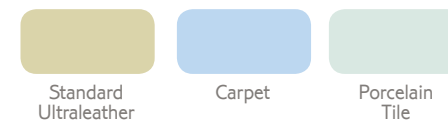
Visit BetterBuiltRVs.com to gain real insight into what goes into a Winnebago Industries motorhome.

TAKE A TOUR

We're proud of our processes, state-of-the-art facilities, and the people who make Winnebago Industries number one. We invite you to visit our complex in Forest City, Iowa, for a first-hand look at the dedication and technology behind every motorhome we build.



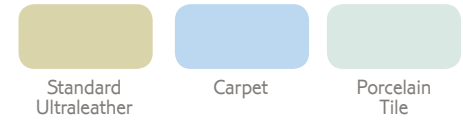
Dimensions shown are for sleeping space only and may vary due to styling differences. Dashed lines denote overhead storage areas. Floorplans and specifications are also available online at **Goltasca.com**.



42GD

Four slideouts, a front driver-side galley with a pull-out island, two HDTVs (front and mid-coach), a generous bathroom with the spacious BIG Shower, and an airy private master suite with a large wardrobe create the ideal space for relaxing and entertaining.

Dimensions shown are for sleeping space only and may vary due to styling differences. Dashed lines denote overhead storage areas. Floorplans and specifications are also available online at Goltasca.com.



42QD

This full-wall slideout creates a roomy living area with an HDTV over a fireplace, a mid-coach guest bath, a roomy master bedroom with twin wardrobes, and a large private master bathroom.

Choose from three fabric collections and three wood choices, each with Satin Nickel hardware.
Running line change effective December 30, 2013: Canyon Trail replacing Royale.

Canyon Trail



Ultraleather



Accent



Bedspread



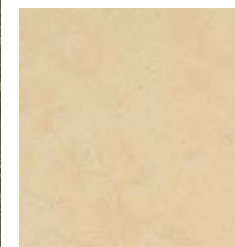
Corian Countertop



Wall Board



Carpet



Porcelain
Tile



Coffee-Glazed
Honey Cherry



Coffee-Glazed
Forest Cherry



Coffee-Glazed
Vienna Maple

Winnebago Industries® reserves the right to change décor materials and specifications without notice or obligation.

Choose from three fabric collections and three wood choices, each with Satin Nickel hardware.

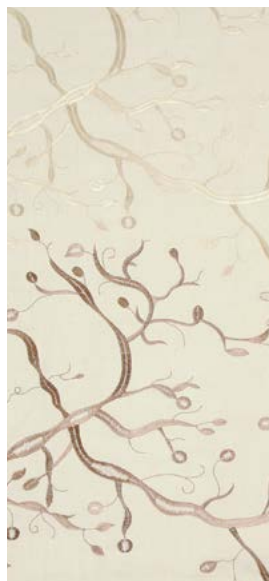
Marbella



Ultraleather



Accent



Bedsread



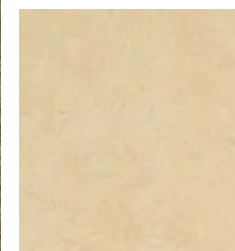
Corian Countertop



Wall Board



Carpet



Porcelain
Tile



Coffee-Glazed
Honey Cherry



Coffee-Glazed
Forest Cherry

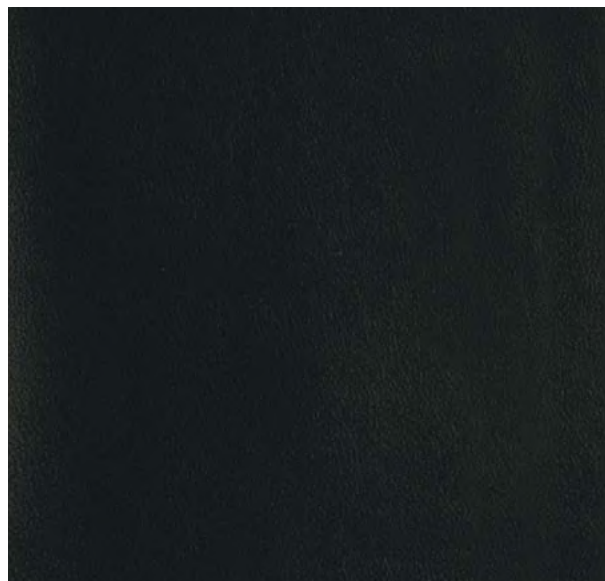


Coffee-Glazed
Vienna Maple

Winnebago Industries® reserves the right to change décor materials and specifications without notice or obligation.

Choose from three fabric collections and three wood choices, each with Satin Nickel hardware.

Delmar



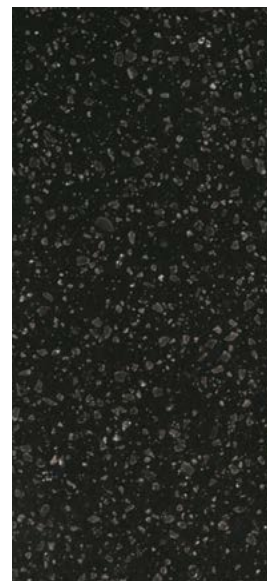
Ultraleather



Accent



Bedspread



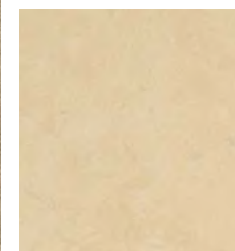
Corian Countertop



Wall Board



Carpet



Porcelain
Tile



Coffee-Glazed
Honey Cherry



Coffee-Glazed
Forest Cherry



Coffee-Glazed
Vienna Maple

Winnebago Industries® reserves the right to change décor materials and specifications without notice or obligation.

Choose from three fabric collections and three wood choices, each with Satin Nickel hardware.
Running line change effective December 30, 2013: Canyon Trail replacing Royale.

Royale



Ultraleather



Accent



Bedspread



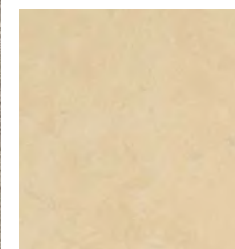
Corian Countertop



Wall Board



Carpet



Porcelain
Tile



Coffee-Glazed
Honey Cherry



Coffee-Glazed
Forest Cherry



Coffee-Glazed
Vienna Maple

Winnebago Industries® reserves the right to change décor materials and specifications without notice or obligation.

Choose from six distinguished full-body paint options for your Ellipse, featuring a premier automotive clearcoat finish and a lower front protective mask.



Sierra
FULL-BODY PAINT



Silver Lining
FULL-BODY PAINT

Choose from six distinguished full-body paint options for your Ellipse, featuring a premier automotive clearcoat finish and a lower front protective mask.



Midnight
FULL-BODY PAINT



Autumn Frost
FULL-BODY PAINT

Choose from six distinguished full-body paint options for your Ellipse, featuring a premier automotive clearcoat finish and a lower front protective mask.



Gunmetal
FULL-BODY PAINT



Silver Maple
FULL-BODY PAINT

Weights & Measures

	42GD	42QD
Length	42'10"	42'10"
Exterior Height ¹	12'10"	12'11"
Exterior Width ²	8'5.5"	8'5.5"
Exterior Storage ³ (cu. ft.)	196	199
Awning Length	20'	14'6"
Interior Height	7'	7'
Interior Width	8'0.5"	8'0.5"
Freshwater Tank Capacity ⁴ (gal.)	85	85
Water Heater Capacity (gal.)	Continuous	Continuous
Holding Tank Capacity - Black/Gray ⁴ (gal.)	51/95	51/71
LP Capacity ⁵ (gal.)	28	28
Fuel Capacity (gal.)	150	150
GCWR ⁶ (lbs.)	59,600	59,600
GVWR (lbs.)	44,600	44,600
GAWR - Front (lbs.)	14,600	14,600
GAWR - Rear (lbs.)	30,000	30,000
Wheelbase	279" + tag	279" + tag

FREIGHTLINER MAXUM CHASSIS

Cummins® ISL 8.9L 450-hp turbo-charged diesel engine

Adjustable brake and accelerator pedals

Allison® 3000 MH 6-speed electronic transmission w/2-stage engine compression brake

Information display center

ZF™ Independent Front Air Suspension, NeWay® rear air suspension

160-amp. alternator

Air brakes w/ABS

Quick-connect air accessory

Automatic leveling jacks w/3-position controls

Tow power package w/7-pin trailer wiring and I.P. wiring

Trailer Hitch⁶ 15,000-lb. drawbar/1,500-lb. maximum vertical tongue weight

Stylized aluminum wheels

Cab Conveniences

Flexsteel® Luxury Cab Seats driver and queen passenger seat w/six-way power, power passenger footrest, heat and massage, remote swivel, power lumbar support, manual recline, adjustable armrests

3-point seat belts

Infotainment Center with Rand McNally RV GPS 10.4" touch screen color monitor w/split screen function, 2nd monitor, Rand McNally RV GPS safe & easy routing, amenities & tools, trips & content, turn-by-turn voice guidance, AM/FM radio w/CD/DVD player, steering wheel and hand held remote, SiriusXM™ (subscription not included), compass, outside temperature, iPod®/iPhone® audio integration, Bluetooth™, color rearview camera, sideview camera display

Video camera system

Tilt/telescoping SmartWheel™ steering wheel w/infinite adjustable column

Cruise control

Power door locks w/remote keyless entry

Electric adjustable mirrors w/defrost, sideview camera and turn signal

12-volt powerpoints

Powered stepwell cover

Two-speed built-in defroster fans

MCD solar/blackout roller shades powered for windshield, manual for driver/passenger windows

Chassis/house battery radio power switch

Dual map lights

C.B. wire prep

Sirius satellite radio w/iPod interface connector

Optional Equipment

Ultra Cab Seats driver and passenger seats w/six-way power, heated, multi-adjustable recline, adjustable lumbar support, +Lounge (passenger seat) w/flip-up tablet and manual footrest

Interior

Electric fireplace

40" HDTV (front overhead 42GD)

46" HDTV (mid-coach 42QD)

55" HDTV (mid-coach 42GD)

Blu-Ray™ Home Theater Sound System CD/DVD player, iPhone/iPod dock w/video, receiver, amplifier, 5 speakers, and 2 subwoofers

Dirt Devil® central vacuum cleaner w/VacPan®

Key-activated slideroom master lock switch

Security Safe

HDMI 4x4 Matrix central video selection system

Satellite system ready (front and bedroom)

OnePlace® systems center

Contour, tinted, dual-glazed, thermo-insulated coach windows

Soft vinyl ceiling

Powered roof vent (galley)

MCD solar/blackout roller shades

LED ceiling lights

Accent lights above front overhead cabinets and ceiling trim panels

Digital TV amplified antenna system

Washer/dryer prep

Optional Equipment

Stackable washer/dryer

Winegard® Trav'ler® automatic multi-satellite antenna

Winegard Mission® in-motion TV antenna system

Galley

Corian® countertops, backsplash and sink covers

Stainless steel microwave/convection oven w/sensor cook and exterior vented range fan

3-burner LP range top w/glass cover and storage below

Residential stainless steel French door refrigerator freezer drawer, water and ice dispenser

Filtered cold-water

Optional Equipment

Stainless steel drawer-style dishwasher

Stainless steel microwave/speedcook oven w/exterior vented range fan

Bath

Corian countertop
Flexible showerhead
Moen® Posi-Temp® shower valve
Textured glass shower door
Skylight (42QD)
Porcelain toilet
Area rug (master bath 42QD)

Bedroom

26" HDTV (42QD)
32" HDTV (42GD)
Ceiling fan
Powered king bed w/Ideal Rest® Natural Reserve digital comfort control mattress and remote controls
Bedsread, pillows and shams

Optional Equipment
Porcelain tile flooring (bedroom)
28" HDTV (42QD)

Exterior

Entertainment Center 32" HDTV w/extendable/pivot mounting bracket, stereo w/remote, HDMI connection, audio out jack, TV jack, power outlets
Auxiliary docking lamps
Driver and passenger-side service bay lights
Two powered acrylic patio awnings w/motion sensors
Powered acrylic entrance awning
Acrylic window awnings
KeyOne™ lock system
Lighted storage compartments
Four storage containers w/lids
7' folding stepladder

Porch and stepwell light
Automatic entrance steps
Lower front protective mask
Premier clearcoat automotive finish
Rear mud flaps
Full-width rear mudguard
Polished stainless steel on lower valance doors and panels

Optional Equipment
90" x 54" slideout storage compartment tray (extends out either side of the coach)
Tailgate Package single-burner induction range top, painted steel counter, refrigerator/freezer on pull-out tray, bottle opener, garbage bag holder, paper towel holder, cold water access port, flexible water spout w/shut off, 15' coil water hose, 110V/AC receptacle, large storage area

Heating & Cooling System

TrueAir® Maximum Comfort A/C three 13,500 BTU low-profile roof air conditioners w/two heat pumps and three condensation pumps
Aqua-Hot® 450 hydronic dual-zone heating system w/continuous hot water
Triple-zone thermostat

Electrical System

Service Center lighted, 120V AC power, cable input, power cord, QuickPort® service connection hatch
PowerLine® Energy Management System
Auxiliary start circuit
50-amp. power cord
Power cord reel
Exterior TV jack and AC duplex receptacle
2,800-watt inverter/converter/charger w/remote panel

10,000-watt Cummins Onan® Quiet Diesel™ generator
Powered generator slideout mechanism
AC/DC electrical distribution system
Six maintenance-free AGM (Absorbed Glass Mat) sealed batteries
Battery disconnect system (coach and chassis)
Automatic dual-battery charge control
Shoreline/generator automatic changeover switch w/Surge Guard® Plus
Chassis battery charger/maintainer
Automatic generator start system

Optional Equipment
All Electric Coach replaces LP range top w/induction range top, LP tank and all components are removed and replaced w/additional storage
100-watt solar panel batter charger

Plumbing System

Service Center lighted, monitor panel, pressurized city water hook-up w/diverter fill, fresh water drain, drainage valves, exterior wash station w/pump switch, glove holder, holding-tank flushing system, paper towel holder, portable satellite dish hook-up, 20' sewer hose w/QuickConnect®, QuickPort service connection hatch, soap dispenser

Water supply hose w/reel
TrueLevel™ holding-tank monitoring system
Full coach water filtration system
Permanent-mount LP tank w/gauge (NA w/All Electric Coach option)
LPG accessory connection (patio area) (NA w/All Electric Coach option)
On-demand water pump
Winterization Package water heater bypass valve and siphon tube
Heated holding-tank compartment

Safety

LP, smoke and carbon monoxide detectors
10 BC fire extinguisher
Ground fault interrupter
Daytime running lamps
Fog lamps
High-mount brake lamps

Warranty⁷

12-month/15,000-mile basic limited warranty⁸
36-month/36,000-mile limited warranty on structure⁸
10-year limited parts-and-labor warranty on roof skin⁸

- 1 The height of each model is measured to the top of the tallest standard feature and is based on the curb weight of a typically equipped unit. The actual height of your vehicle may vary by several inches depending on chassis or equipment variations. Please contact your dealer for further information.
- 2 Floorplans feature a wide-body design—over 96" in making your purchase decision, you should be aware that some states restrict access on some or all state roads to 96" in body width. Before making your purchase decision, you should confirm the road usage laws in the states of interest to you.
- 3 The load capacity of your motorhome is designated by weight, not by volume, so you cannot necessarily use all available space when loading your motorhome.
- 4 Capacities are based on measurements prior to tank installation. Slight capacity variations can result due to installation applications.
- 5 Capacities shown are tank manufacturer's listed water capacity (W.C.). Actual filled LP capacity is 80% of listing due to overfilling prevention device on tank.
- 6 Actual towing capacity is dependent on your particular loading and towing circumstances which includes the GVWR, GAWR, and GCWR, as well as adequate trailer brakes. Please refer to the Operator's Manual of your vehicle for further towing information.
- 7 See separate chassis warranty.
- 8 See your dealer for complete warranty information.

NA Not Available
Not all items available in combination. See dealer for details.
Winnebago Industries® continuing program of product improvement makes specifications, equipment, model availability, and prices subject to change without notice. Published content reflects the most current product information at time of printing. Please consult your dealer for individual vehicle features and specifications



GOITASCA.COM HAS ALL THE ANSWERS

Visit **GoItasca.com** on your computer, smartphone or tablet for the latest product information and updates.

COMMITTED TO SERVICE

PREFERRED CARE PROGRAM

We back our motorhomes with best-in-class support both before and after the sale:

- 12-month/15,000-mile basic limited warranty
- 36-month/36,000-mile limited warranty on structure
- 10-year limited parts-and-labor warranty on roof skin
- Complimentary 24-hour roadside assistance program

Premium ROADSIDE ASSISTANCE



- TripSaver® Fast Track Parts guarantees that in-stock warranty parts ship directly to your dealer within 24 hours
- National dealer service network



WIT CLUB

JOIN THE CLUB, JOIN THE FUN

As an Itasca motorhome owner, you are invited to join the WIT Club. It's a great way to take full advantage of your new coach and meet fun-loving WIT Club members from across the country who make motorhome adventures a way of life.



Members enjoy:

- Caravans and rallies
- Newsletters
- Local and state group activities
- RV travel benefits

See more at **WITclub.com**



GRAND NATIONAL RALLY

In 1969, two things happened: Neil Armstrong took mankind's first steps on the moon, and Winnebago Industries' WIT Club launched its first Grand National Rally in Forest City, Iowa. Every year since then, thousands of rally-goers connect with old friends to enjoy concerts, tours, activities, and more. Blast off for an adventurous week in July to celebrate 45 years of interstate land roving at the 2014 "Out of This World" Grand National Rally. It's a mission you'll never forget!